

SUBMITTAL SHEETS

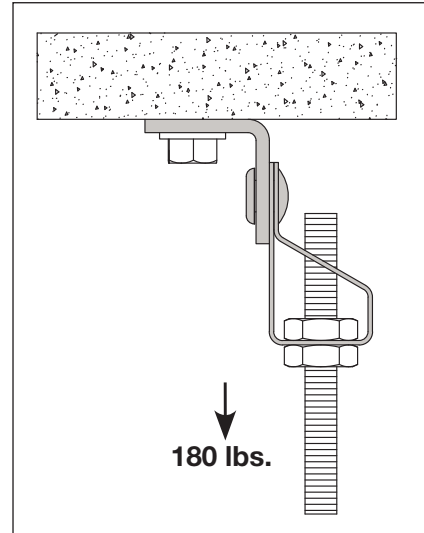
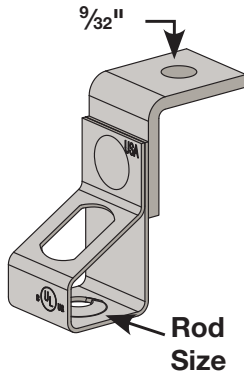
Spring Steel



Structural Attachment

ABR T

Angle Bracket with Rod Hanger Thread Install



Part No.	Rod Size
ABRH4T	1/4 - 20 Thread Form
ABRH6T	3/8 - 16 Thread Form
ABRTH6 *	13/32" Thru Hole for 1/4" or 3/8" Threaded Rod

* Nuts sold separately

- Attaches to concrete, wood and steel.
- Suspends threaded rod from horizontal surfaces.
- **Material:** Steel & Spring Steel
- **Finish:** Pregalvanized & Silva-Guard

Finish or Material Order Codes			
Material/Finish	ASTM Designation	Material/Finish Codes	Description
Carbon Steel	ASTM A1011-00 SS GR 33 or ASTM A1011-00CS Type B	See Finishes Below	Steel
Spring Steel	ASTM A684 Grade 1055	See Finishes Below	Cold rolled Spring Steel sheet
Silva-Guard	--	SG	Silva-Guard coating is a multi-step process that meets the 1000 hour salt spray test per ASTM B117 and DIN 50021. Silva-Guard coating is WEEE, ELV and RoHS compliant. SG Finish is approved for outdoor as well as indoor applications. It is a chrome free duplex coating system that combines an inorganic zinc-rich base coat with an aluminum-rich organic topcoat.
Electroplated	ASTM B 633 SC1 or SC3, Type III	EG	This coating is standard for most products. Electroplating deposits zinc on the surface of the steel by electrolysis from a bath of zinc salts.
Pre-Galvanized	A 653 SS GR33 G90.	PG	Pre-galvanized zinc is produced by continuously rolling steel coils or sheets through molten zinc at the mills.

PROJECT INFORMATION:	APPROVAL STAMP:
Project:	
Date:	
Phone:	
Architect / Engineer:	
Contractor:	
Address:	
Notes 1:	

ABR-T

H08/24 - 74



WARNING: Cancer and Reproductive Harm Warning.
For more information go to www.P65Warnings.ca.gov.

www.ZSIINC.com

